

| REVISIONS |     |             |            |          |
|-----------|-----|-------------|------------|----------|
| ECN       | REV | DESCRIPTION | DATE       | APPROVED |
| -         | A   | NEW RELEASE | 11/18/2021 | SPJ      |

**NOTES**

1. Sheets 1 through 5 will show the cabinet in various forms.
2. Removable access plates at the top and bottom of the cabinet for source input and panelboard output
3. Sheet 2 details outer dimensions of cabinet and detail the wall-mount configuration.
4. Sheet 3 details the internal components
5. Sheet 4 details cable landing locations
6. Keyhole brackets provided at the top and bottom of the cabinet for wall mounting  
- Use 3/8 inch hardware - See Sheet 2, Detail A
7. Floor transport brackets are provided for transport and are to be removed after final positioning.
8. See One Line Electrical Diagram for detail of components and representation of system
9. Optional Floorstand is provided and ships separately. See Sheet7
10. Junction Box is provided and ships separately See Sheet6.

Copyright © 2021, LayerZero Power Systems, Inc.

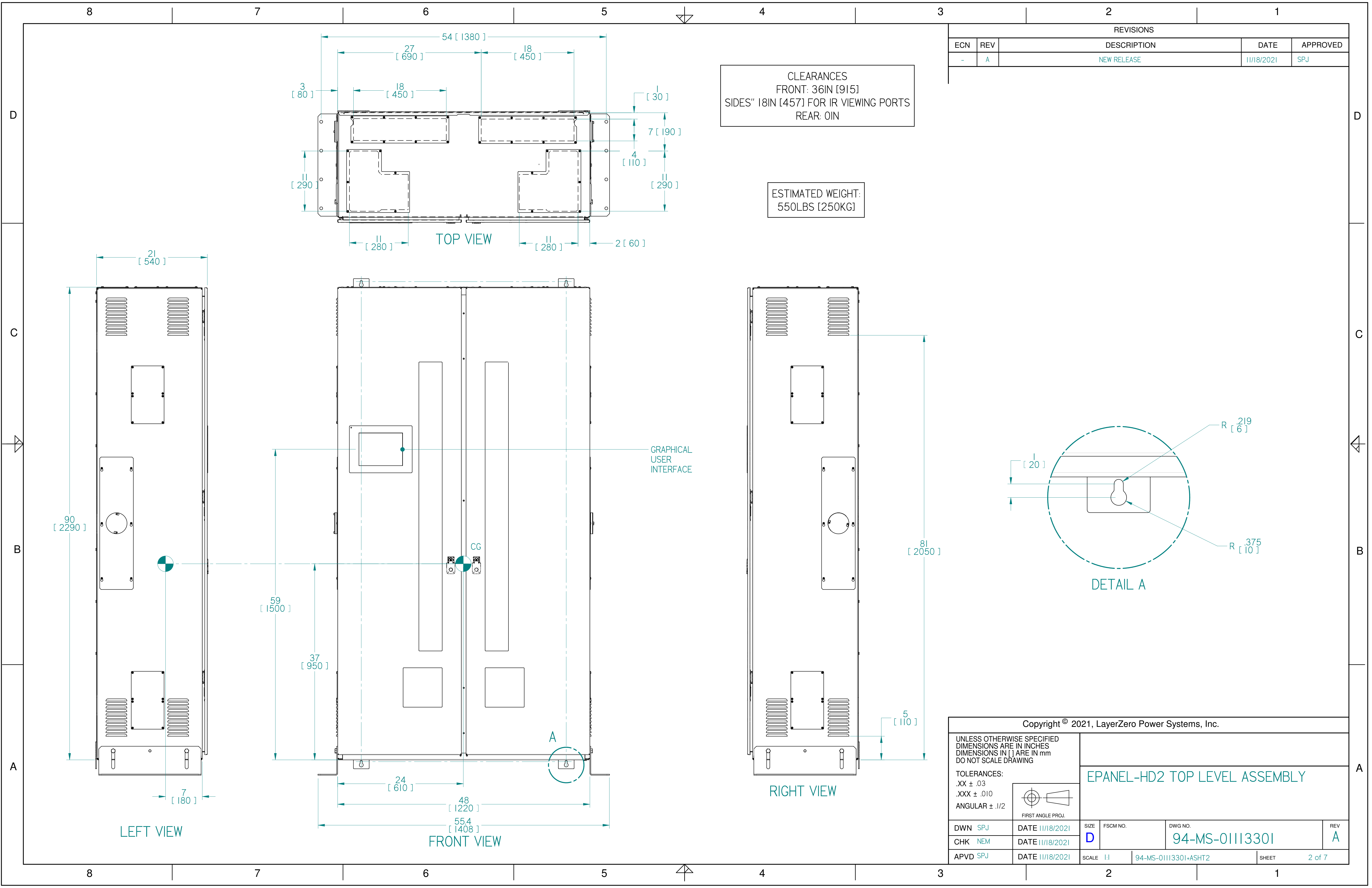
UNLESS OTHERWISE SPECIFIED  
DIMENSIONS ARE IN INCHES  
DIMENSIONS IN [ ] ARE IN mm  
DO NOT SCALE DRAWING

TOLERANCES:  
.XX ± .03  
.XXX ± .010  
ANGULAR ± .1/2

FIRST ANGLE PROJ.

**EPANEL-HD2 TOP LEVEL ASSEMBLY**

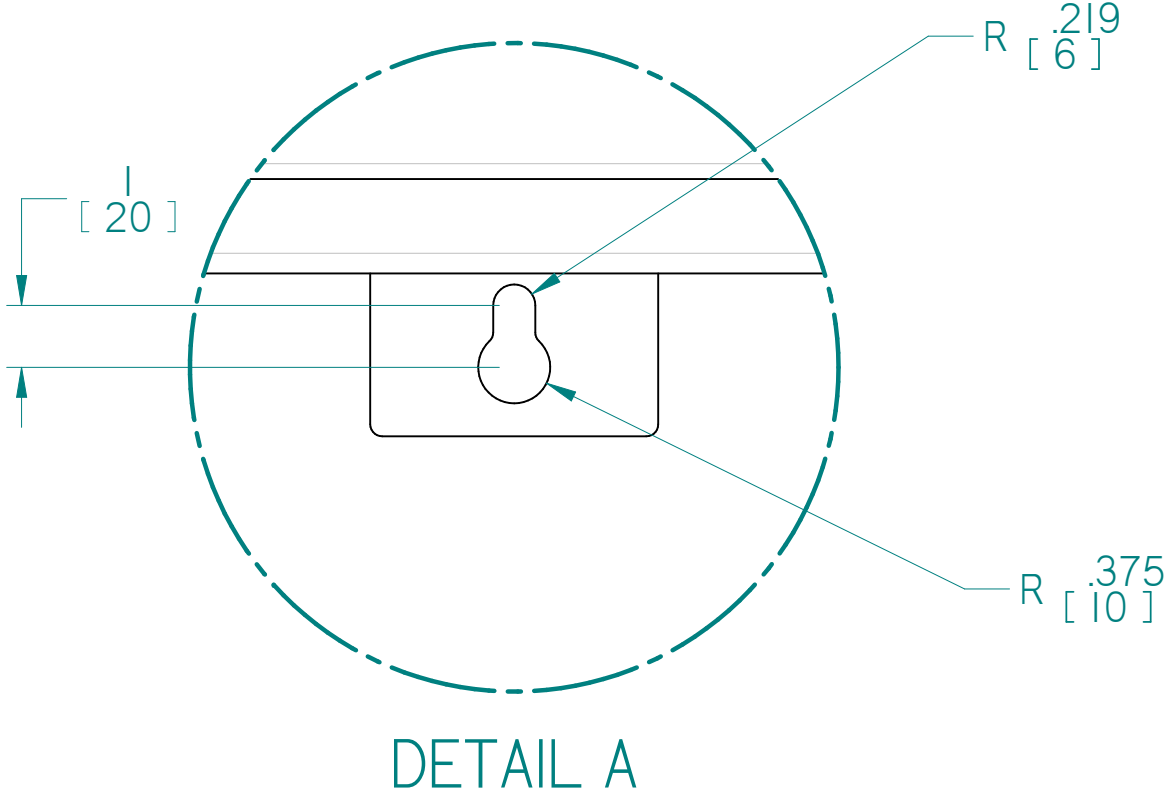
|          |                 |           |          |                        |              |
|----------|-----------------|-----------|----------|------------------------|--------------|
| DWN SPJ  | DATE 11/18/2021 | SIZE D    | FSCM NO. | DWG NO. 94-MS-01113301 | REV A        |
| CHK NEM  | DATE 11/18/2021 | SCALE 1:6 |          | 94-MS-01113301+ASHTI   | SHEET 1 of 7 |
| APVD SPJ | DATE 11/18/2021 |           |          |                        |              |



CLEARANCES  
 FRONT: 36IN [915]  
 SIDES: 18IN [457] FOR IR VIEWING PORTS  
 REAR: 0IN

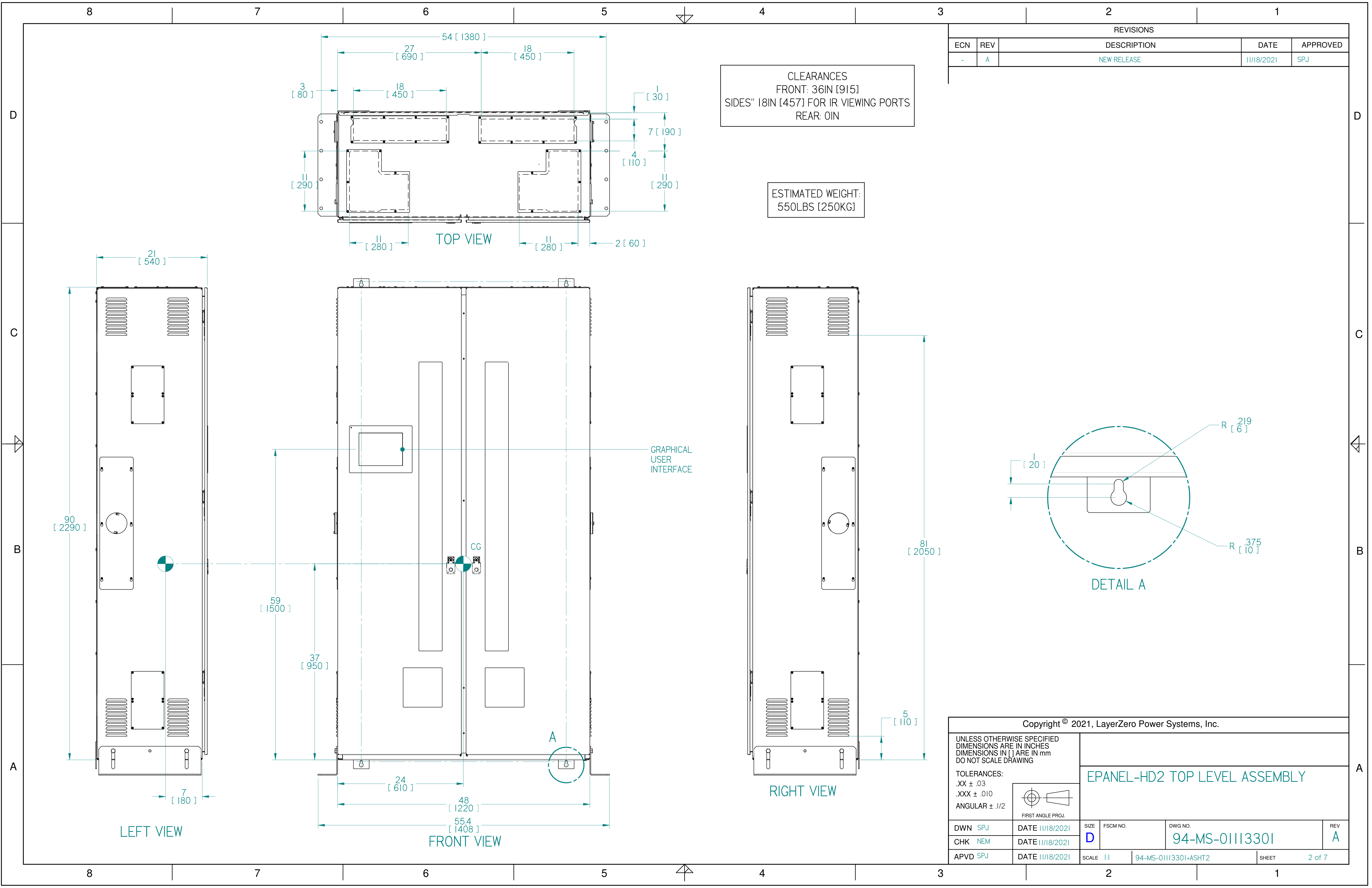
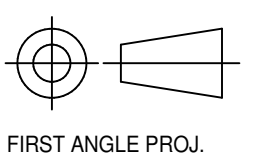
ESTIMATED WEIGHT:  
 550LBS [250KG]

| REVISIONS |     |             |            |          |
|-----------|-----|-------------|------------|----------|
| ECN       | REV | DESCRIPTION | DATE       | APPROVED |
| -         | A   | NEW RELEASE | 11/18/2021 | SPJ      |

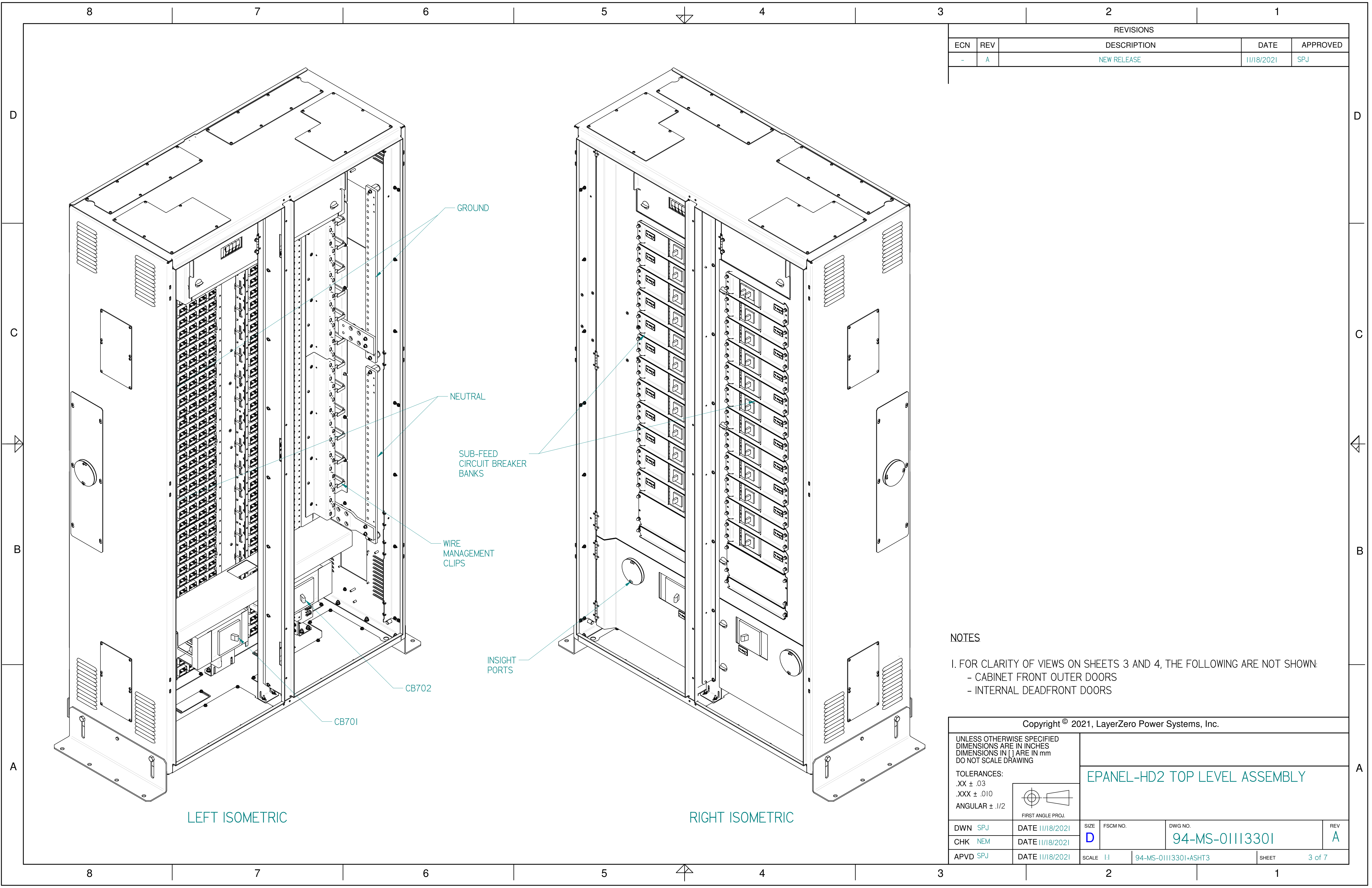


|   |  |                 |                        |          |
|---|--|-----------------|------------------------|----------|
| Copyright © 2021, LayerZero Power Systems, Inc.   |  |                 |                        |          |
| UNLESS OTHERWISE SPECIFIED<br>DIMENSIONS ARE IN INCHES<br>DIMENSIONS IN [ ] ARE IN mm<br>DO NOT SCALE DRAWING |  |                 |                        |          |
| TOLERANCES:<br>.XX ± .03<br>.XXX ± .010<br>ANGULAR ± .1/2   |  |                 |                        |          |
| DWN SPJ   |  | DATE 11/18/2021 | SIZE D                 | FSCM NO. |
| CHK NEM   |  | DATE 11/18/2021 | DWG NO. 94-MS-01113301 |          |
| APVD SPJ  |  | DATE 11/18/2021 | SCALE 1:1              | REV A    |
| 94-MS-01113301-ASHT2  |  |                 | SHEET                  | 2 of 7   |

EPANEL-HD2 TOP LEVEL ASSEMBLY







| REVISIONS |     |             |            |          |
|-----------|-----|-------------|------------|----------|
| ECN       | REV | DESCRIPTION | DATE       | APPROVED |
| -         | A   | NEW RELEASE | 11/18/2021 | SPJ      |

**NOTES**

- I. FOR CLARITY OF VIEWS ON SHEETS 3 AND 4, THE FOLLOWING ARE NOT SHOWN:
  - CABINET FRONT OUTER DOORS
  - INTERNAL DEADFRONT DOORS

Copyright © 2021, LayerZero Power Systems, Inc.

UNLESS OTHERWISE SPECIFIED  
DIMENSIONS ARE IN INCHES  
DIMENSIONS IN [ ] ARE IN mm  
DO NOT SCALE DRAWING

TOLERANCES:  
.XX ± .03  
.XXX ± .010  
ANGULAR ± .1/2

FIRST ANGLE PROJ.

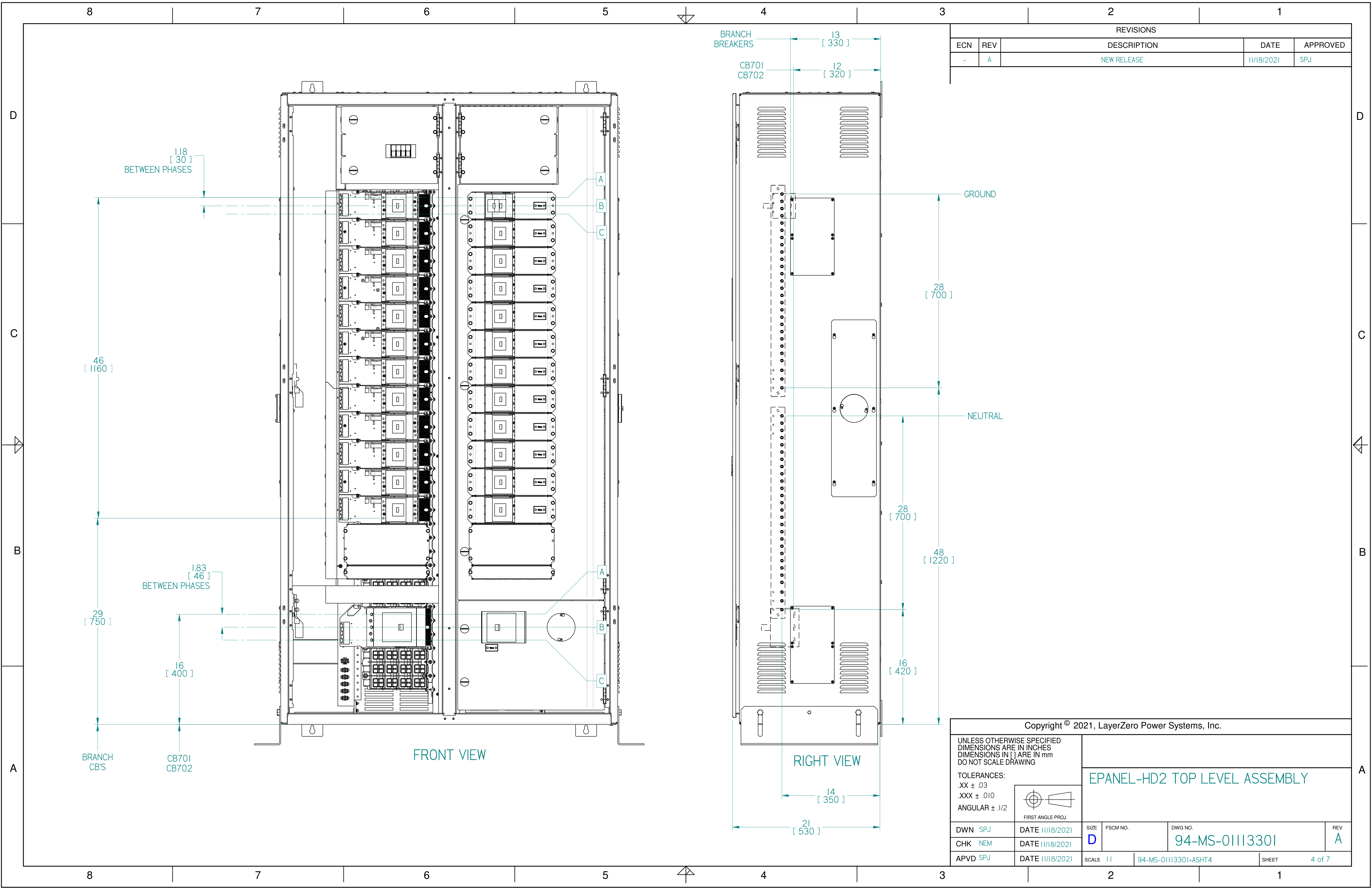
**EPANEL-HD2 TOP LEVEL ASSEMBLY**

|          |                 |           |          |                        |              |
|----------|-----------------|-----------|----------|------------------------|--------------|
| DWN SPJ  | DATE 11/18/2021 | SIZE D    | FSCM NO. | DWG NO. 94-MS-01113301 | REV A        |
| CHK NEM  | DATE 11/18/2021 | SCALE 1:1 |          | 94-MS-01113301-ASHT3   | SHEET 3 of 7 |
| APVD SPJ | DATE 11/18/2021 |           |          |                        |              |

LEFT ISOMETRIC

RIGHT ISOMETRIC





| REVISIONS |     |             |            |          |
|-----------|-----|-------------|------------|----------|
| ECN       | REV | DESCRIPTION | DATE       | APPROVED |
| -         | A   | NEW RELEASE | 11/18/2021 | SPJ      |

Copyright © 2021, LayerZero Power Systems, Inc.

UNLESS OTHERWISE SPECIFIED  
DIMENSIONS ARE IN INCHES  
DIMENSIONS IN [ ] ARE IN mm  
DO NOT SCALE DRAWING

TOLERANCES:  
.XX ± .03  
.XXX ± .010  
ANGULAR ± .1/2

FIRST ANGLE PROJ.

**EPANEL-HD2 TOP LEVEL ASSEMBLY**

|          |                 |           |                      |                        |       |
|----------|-----------------|-----------|----------------------|------------------------|-------|
| DWN SPJ  | DATE 11/18/2021 | SIZE D    | FSCM NO.             | DWG NO. 94-MS-01113301 | REV A |
| CHK NEM  | DATE 11/18/2021 | SCALE 1:1 | 94-MS-01113301-ASHT4 | SHEET 4 of 7           |       |
| APVD SPJ | DATE 11/18/2021 |           |                      |                        |       |

| REVISIONS |     |             |            |          |
|-----------|-----|-------------|------------|----------|
| ECN       | REV | DESCRIPTION | DATE       | APPROVED |
| -         | A   | NEW RELEASE | 11/18/2021 | SPJ      |

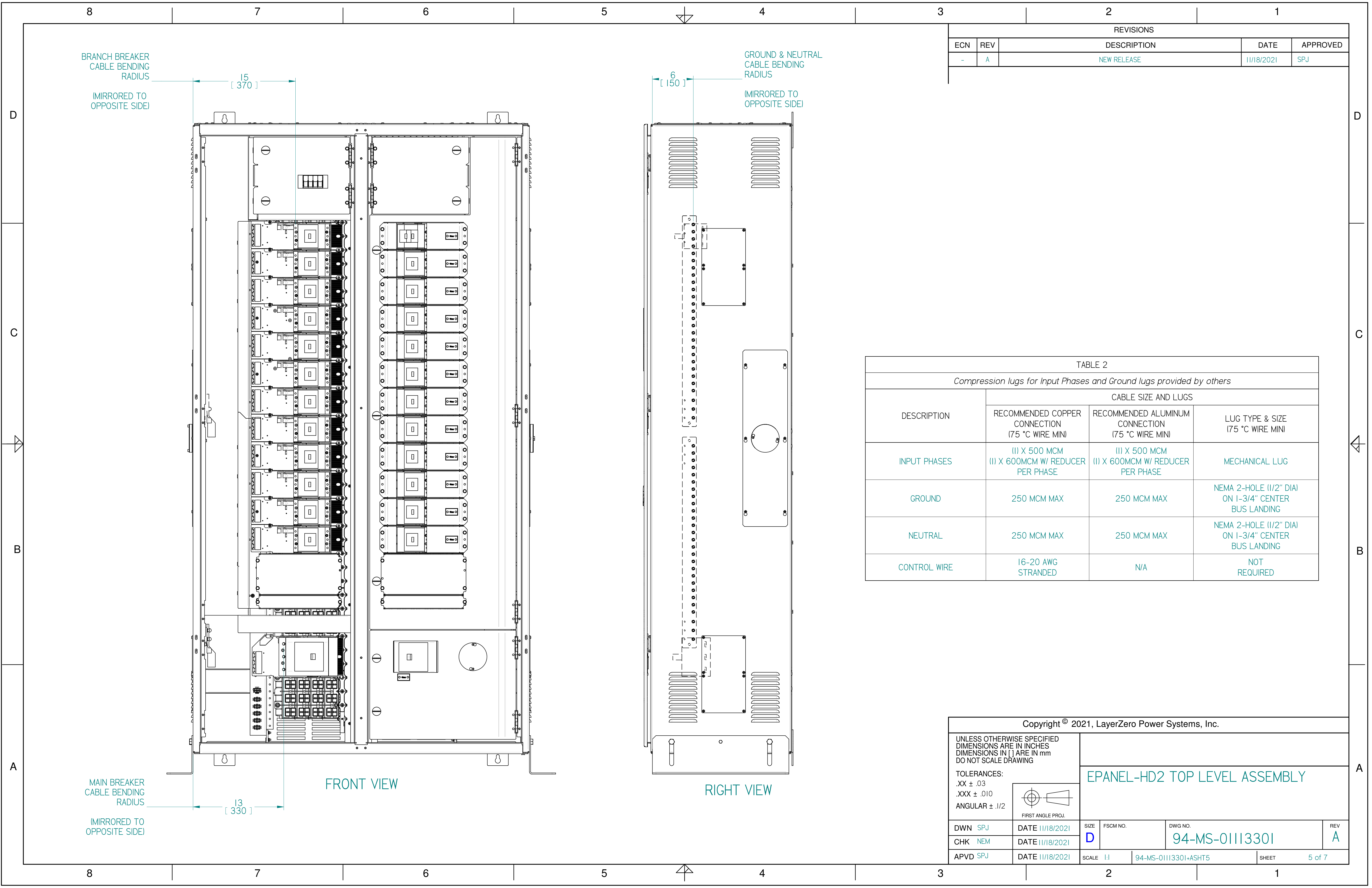


TABLE 2  
Compression lugs for Input Phases and Ground lugs provided by others

| DESCRIPTION  | CABLE SIZE AND LUGS                                 |   |   |
|--------------|---|---|---|
|              | RECOMMENDED COPPER CONNECTION (75 °C WIRE MINI)     | RECOMMENDED ALUMINUM CONNECTION (75 °C WIRE MINI)   | LUG TYPE & SIZE (75 °C WIRE MINI)                   |
| INPUT PHASES | (I) X 500 MCM<br>(II) X 600MCM W/ REDUCER PER PHASE | (I) X 500 MCM<br>(II) X 600MCM W/ REDUCER PER PHASE | MECHANICAL LUG                                      |
| GROUND       | 250 MCM MAX   | 250 MCM MAX   | NEMA 2-HOLE (1/2" DIA) ON 1-3/4" CENTER BUS LANDING |
| NEUTRAL      | 250 MCM MAX   | 250 MCM MAX   | NEMA 2-HOLE (1/2" DIA) ON 1-3/4" CENTER BUS LANDING |
| CONTROL WIRE | 16-20 AWG STRANDED                                  | N/A   | NOT REQUIRED  |

Copyright © 2021, LayerZero Power Systems, Inc.

UNLESS OTHERWISE SPECIFIED  
DIMENSIONS ARE IN INCHES  
DIMENSIONS IN [ ] ARE IN mm  
DO NOT SCALE DRAWING

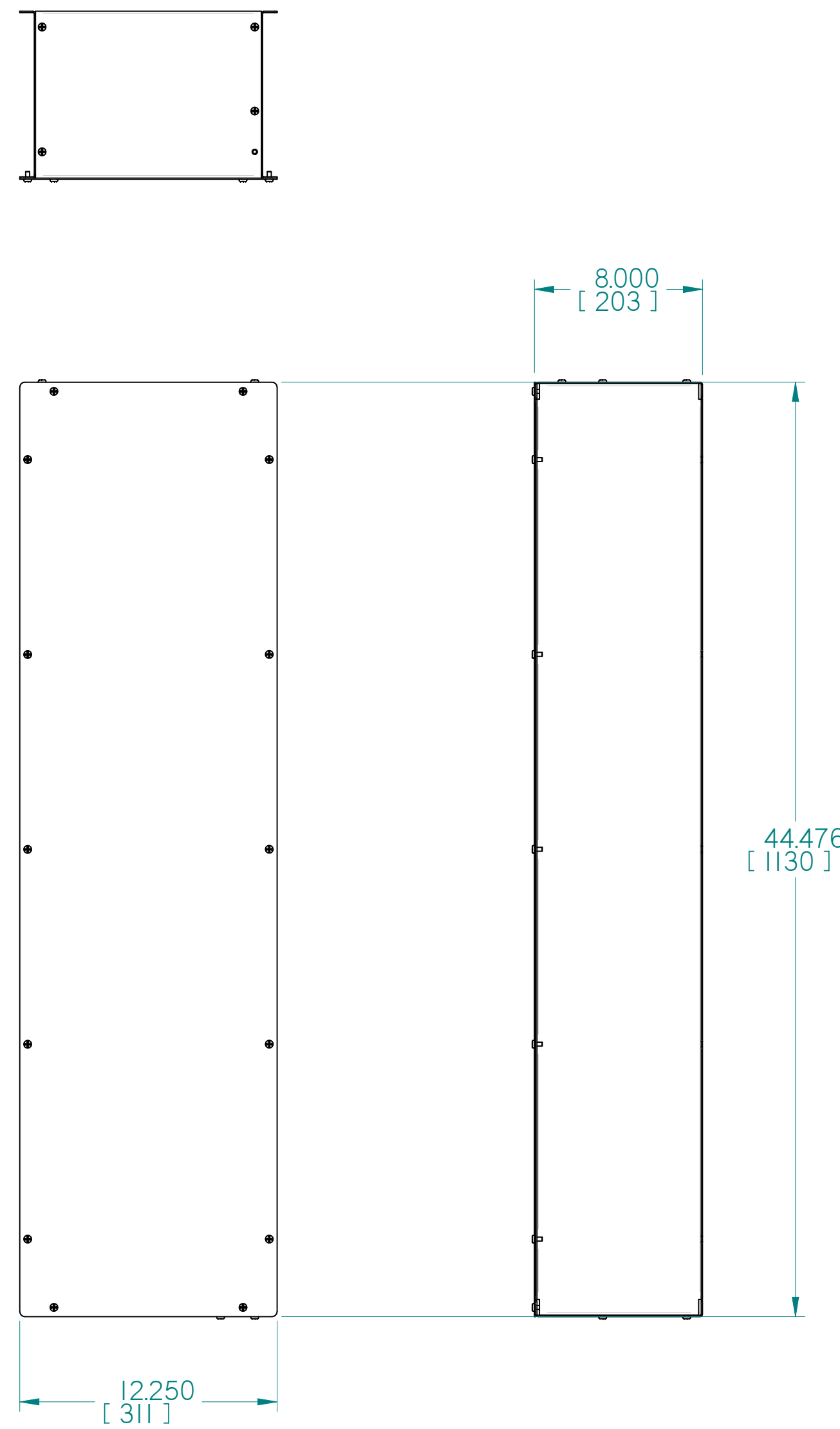
TOLERANCES:  
.XX ± .03  
.XXX ± .010  
ANGULAR ± .1/2

FIRST ANGLE PROJ.

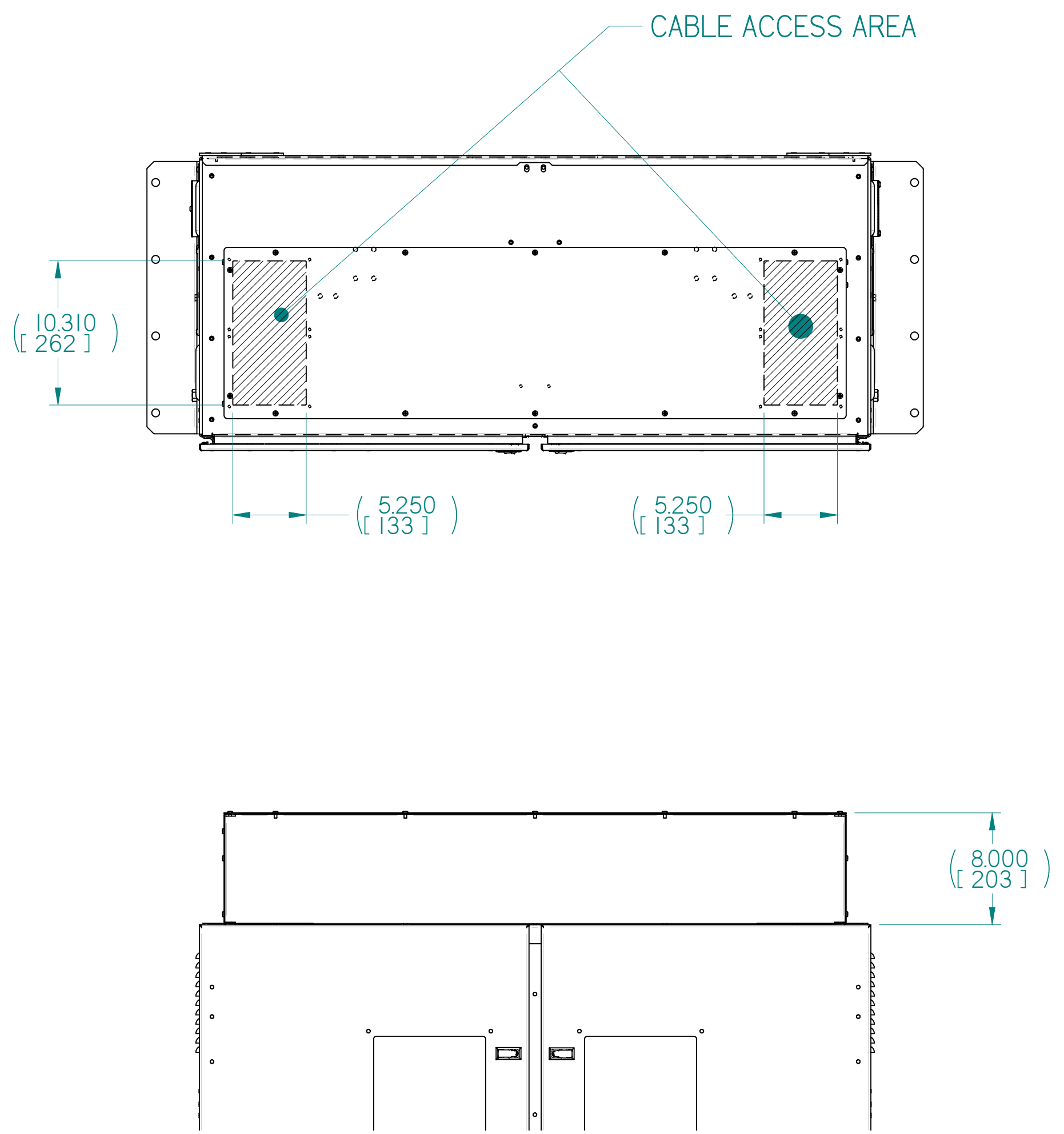
**EPANEL-HD2 TOP LEVEL ASSEMBLY**

|          |                 |           |          |                        |              |
|----------|-----------------|-----------|----------|------------------------|--------------|
| DWN SPJ  | DATE 11/18/2021 | SIZE D    | FSCM NO. | DWG NO. 94-MS-01113301 | REV A        |
| CHK NEM  | DATE 11/18/2021 | SCALE 1:1 |          | 94-MS-01113301-ASHT5   | SHEET 5 of 7 |
| APVD SPJ | DATE 11/18/2021 |           |          |                        |              |

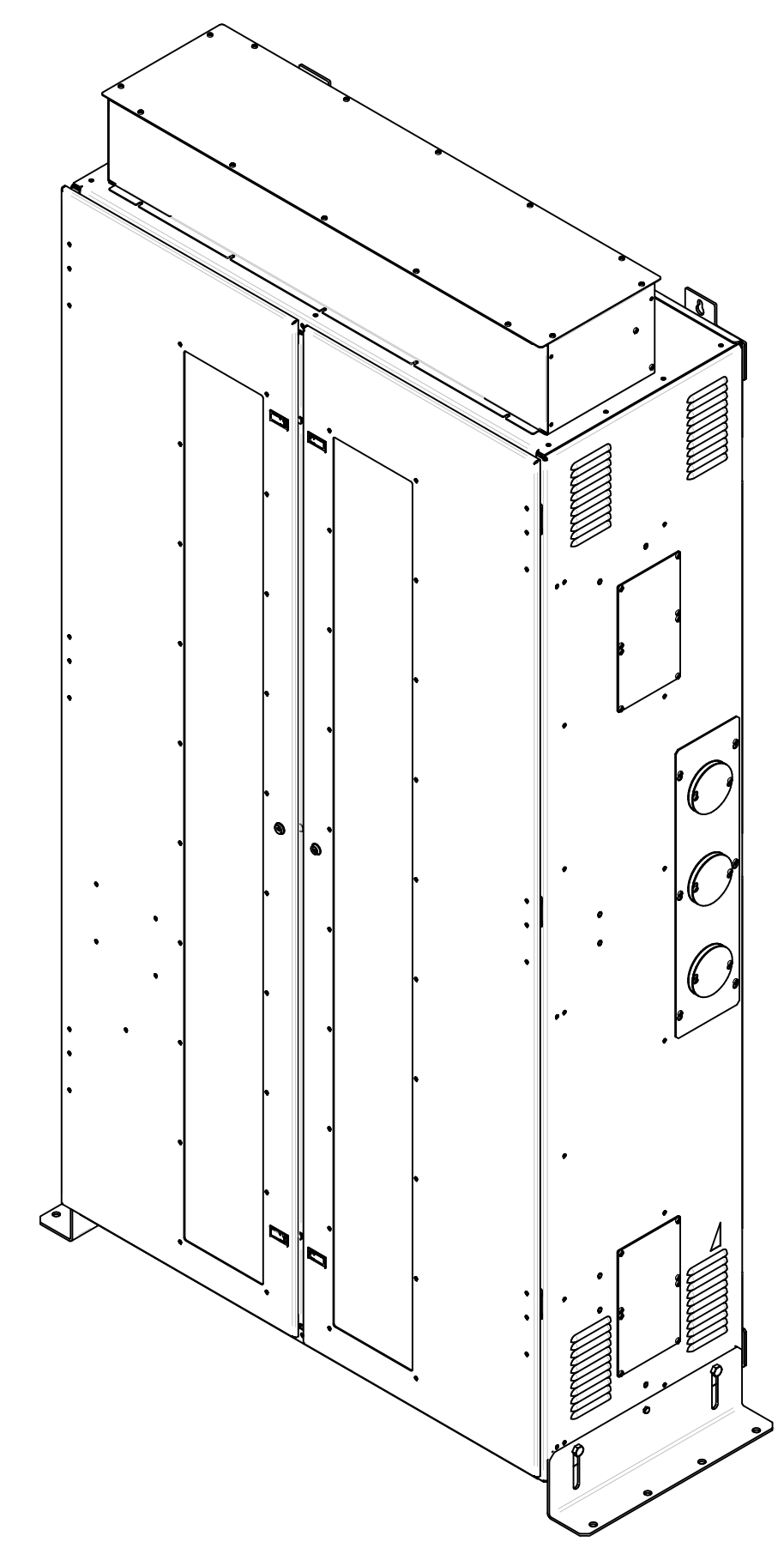
| REVISIONS |     |             |            |          |
|-----------|-----|-------------|------------|----------|
| ECN       | REV | DESCRIPTION | DATE       | APPROVED |
| -         | A   | NEW RELEASE | 11/18/2021 | SPJ      |



JUNCTION BOX  
PN 42-00-40506201



JUNCTION BOX INSTALLATION



Copyright © 2021, LayerZero Power Systems, Inc.

UNLESS OTHERWISE SPECIFIED  
DIMENSIONS ARE IN INCHES  
DIMENSIONS IN [ ] ARE IN mm  
DO NOT SCALE DRAWING

TOLERANCES:  
.XX ± .03  
.XXX ± .010  
ANGULAR ± .1/2

FIRST ANGLE PROJ.

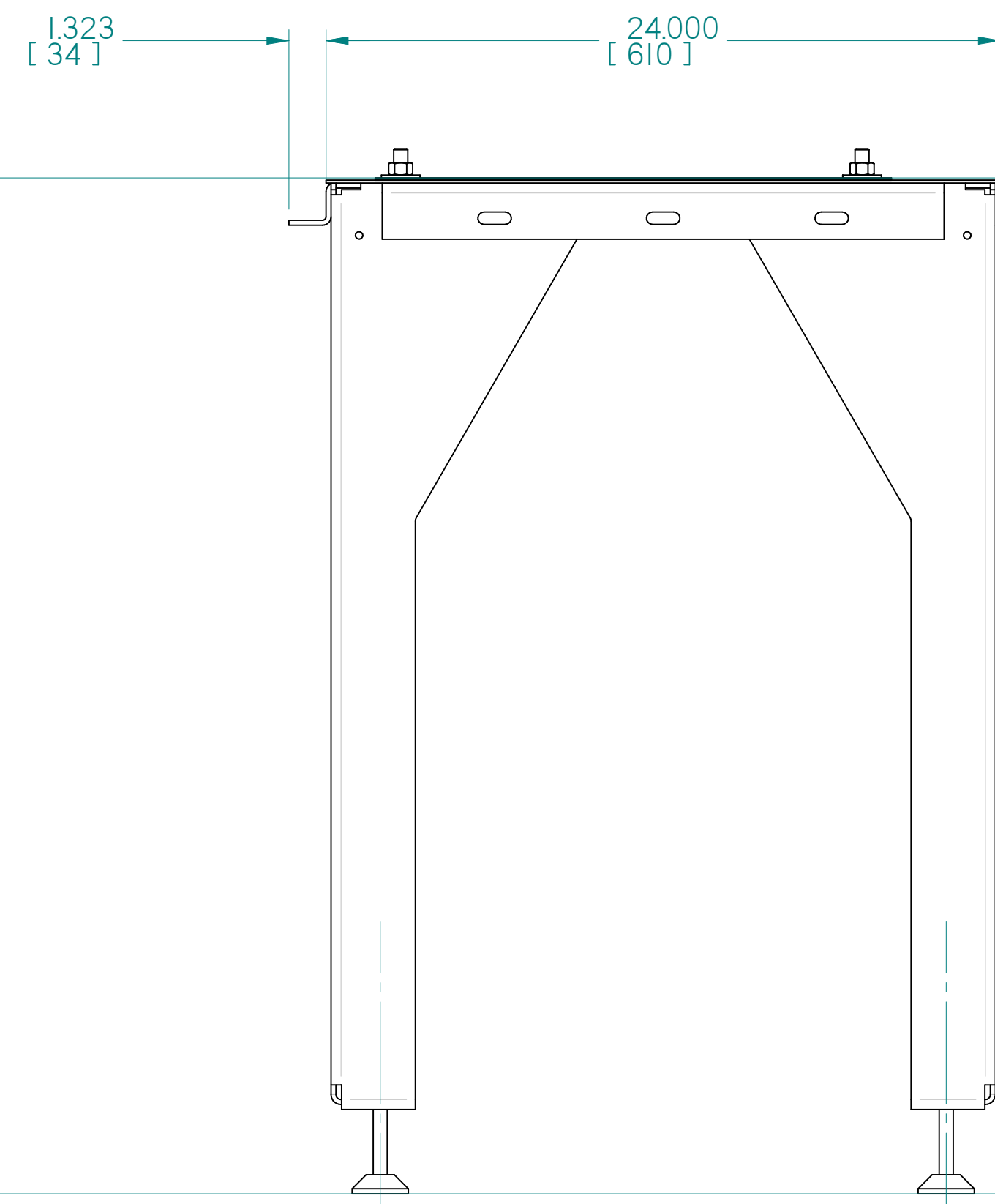
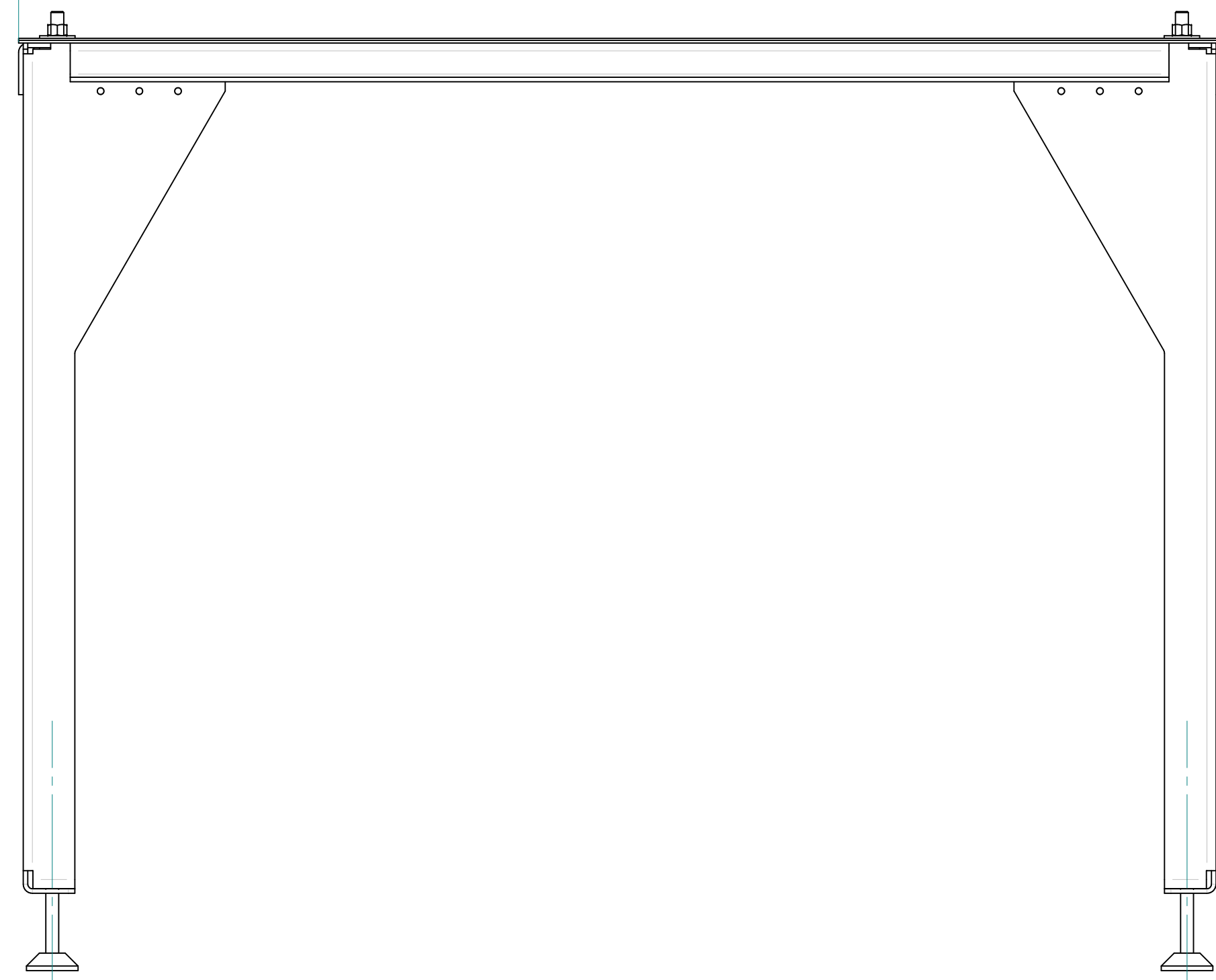
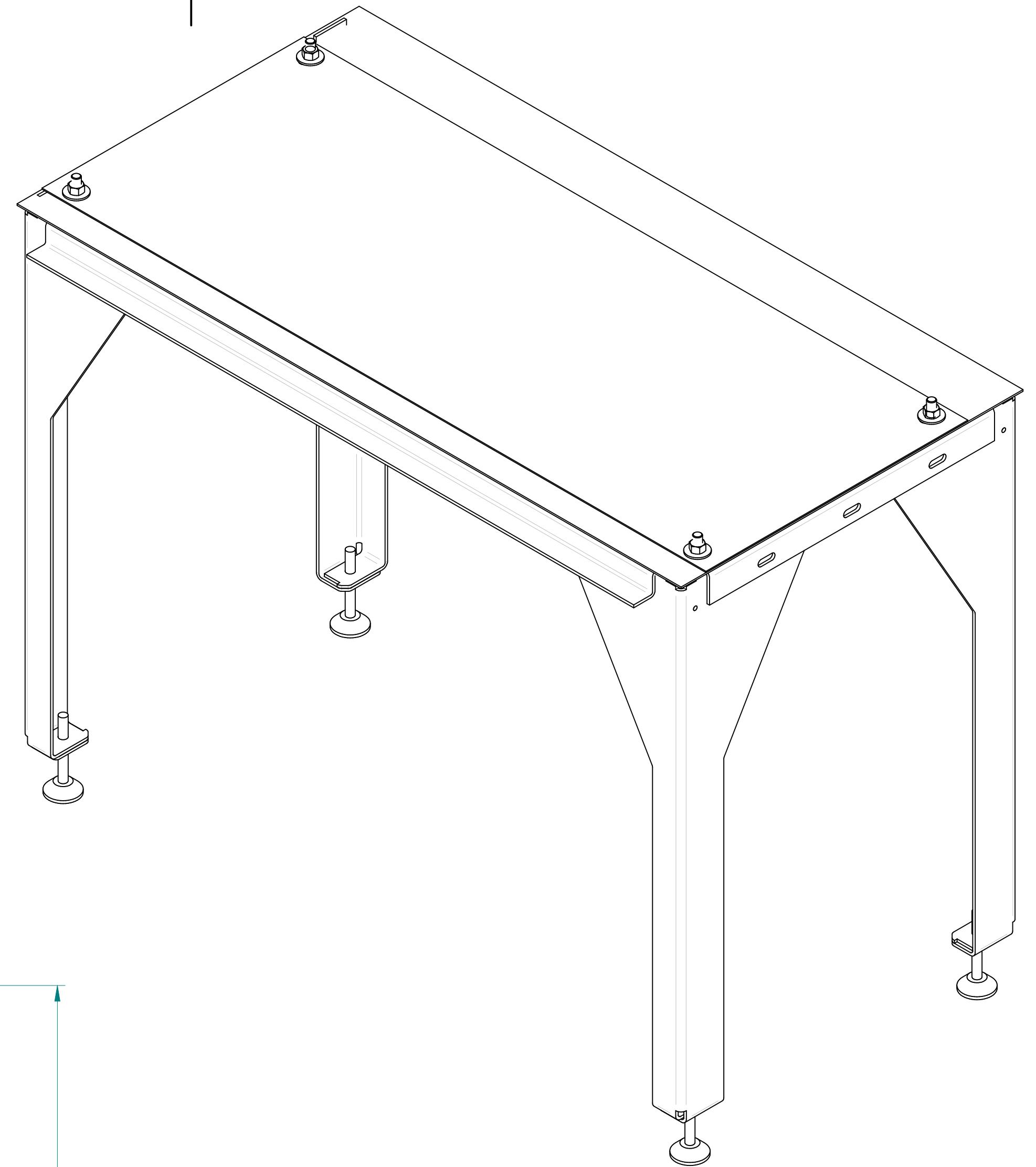
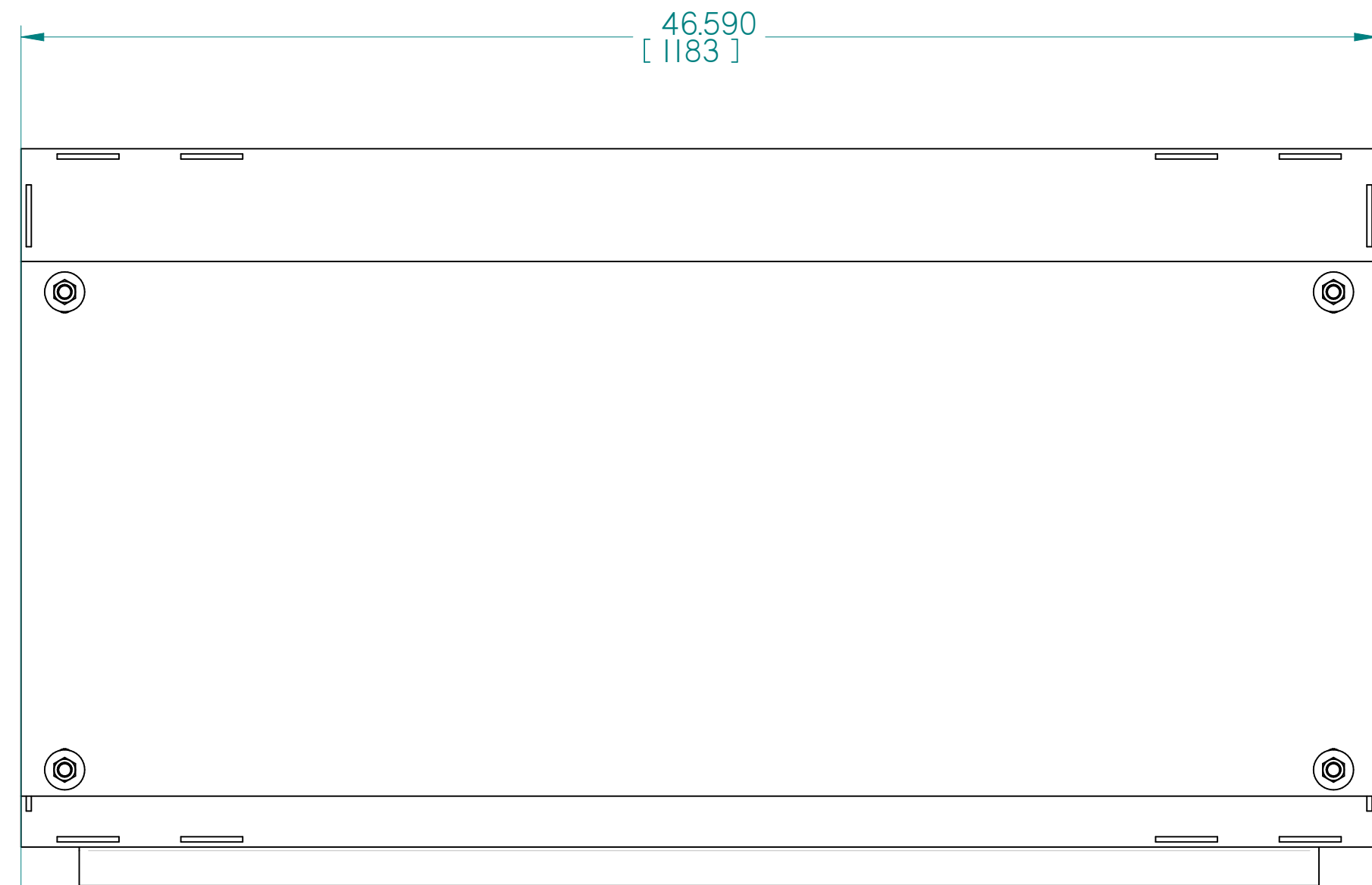
EPANEL-HD2 TOP LEVEL ASSEMBLY

|          |                 |           |                      |                        |       |
|----------|-----------------|-----------|----------------------|------------------------|-------|
| DWN SPJ  | DATE 11/18/2021 | SIZE D    | FSCM NO.             | DWG NO. 94-MS-01113301 | REV A |
| CHK NEM  | DATE 11/18/2021 | SCALE 1:1 | 94-MS-01113301-ASHT6 | SHEET 6 of 7           |       |
| APVD SPJ | DATE 11/18/2021 |           |                      |                        |       |



# FLOOR STAND ASSEMBLY

| REVISIONS |     |             |            |          |
|-----------|-----|-------------|------------|----------|
| ECN       | REV | DESCRIPTION | DATE       | APPROVED |
| -         | A   | NEW RELEASE | 11/18/2021 | SPJ      |



24.00 +/- 1.00  
[610 +/- 25]

44  
[1117]

20.146  
[512]

Copyright © 2021, LayerZero Power Systems, Inc.

UNLESS OTHERWISE SPECIFIED  
DIMENSIONS ARE IN INCHES  
DIMENSIONS IN [ ] ARE IN mm  
DO NOT SCALE DRAWING

TOLERANCES:  
.XX ± .03  
.XXX ± .010  
ANGULAR ± .1/2

FIRST ANGLE PROJ.

EPANEL-HD2 TOP LEVEL ASSEMBLY

|          |                 |           |                      |                        |              |
|----------|-----------------|-----------|----------------------|------------------------|--------------|
| DWN SPJ  | DATE 11/18/2021 | SIZE D    | FSCM NO.             | DWG NO. 94-MS-01113301 | REV A        |
| CHK NEM  | DATE 11/18/2021 | SCALE 1:1 | 94-MS-01113301-ASHT7 |                        | SHEET 7 of 7 |
| APVD SPJ | DATE 11/18/2021 |           |                      |                        |              |