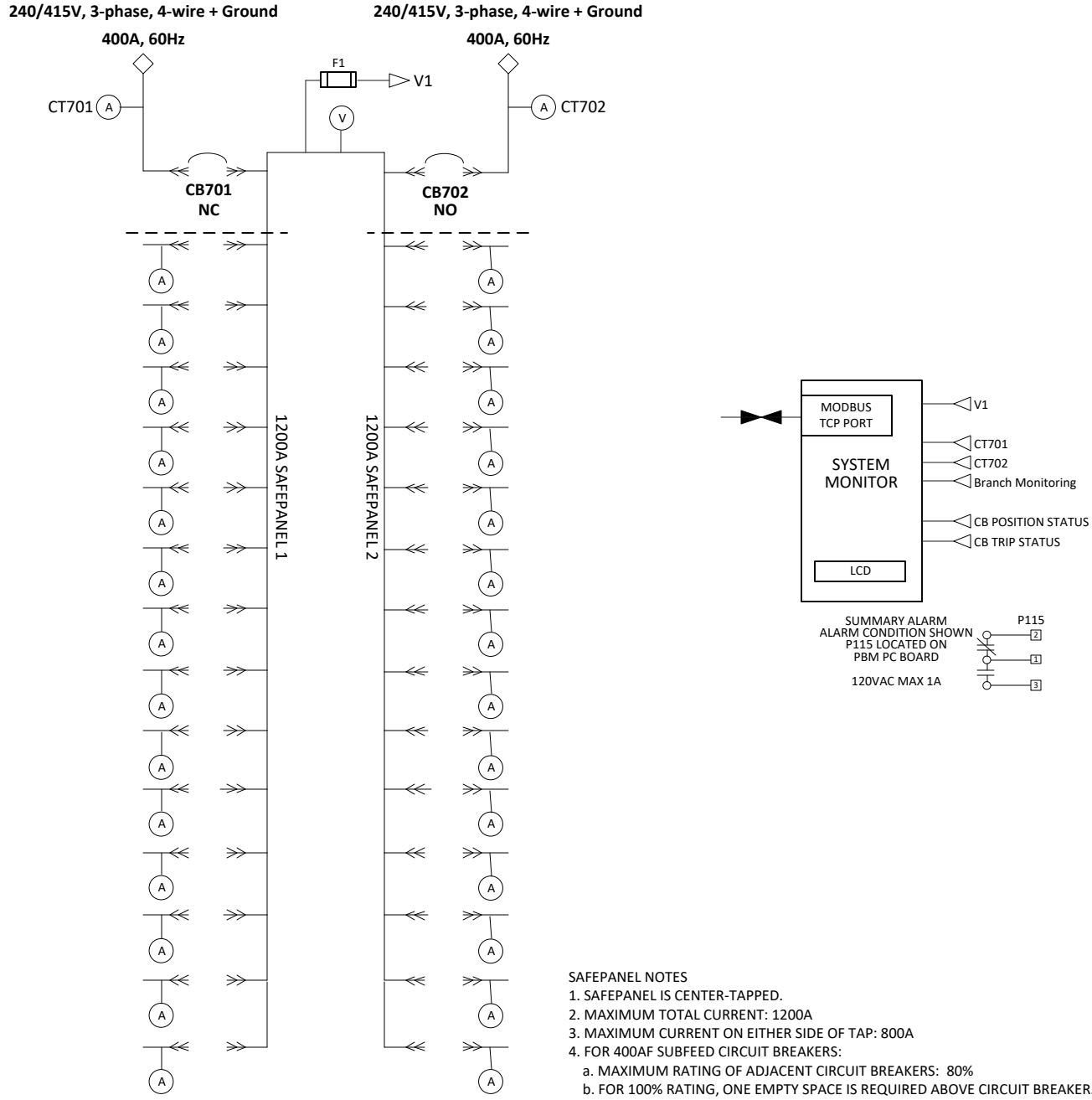


# Series 70 ePanel-HD2

2-Input / 2-Panel / Feed Through (FT)



- SAFEPANEL NOTES**
1. SAFEPANEL IS CENTER-TAPPED.
  2. MAXIMUM TOTAL CURRENT: 1200A
  3. MAXIMUM CURRENT ON EITHER SIDE OF TAP: 800A
  4. FOR 400AF SUBFEED CIRCUIT BREAKERS:
    - a. MAXIMUM RATING OF ADJACENT CIRCUIT BREAKERS: 80%
    - b. FOR 100% RATING, ONE EMPTY SPACE IS REQUIRED ABOVE CIRCUIT BREAKER.

INPUT TERMINALS	
PHASE RATING (A,B,C)	400A
PHASE TERMINATIONS	(1) 250-500 MCM Mechanical Lugs
NEUTRAL RATING (N)	400A
NEUTRAL TERMINATIONS	Two-hole Compression Lug Terminals
GROUND RATING (G)	400A
GROUND TERMINATIONS	Two-hole Compression Lug Terminals

CIRCUIT BREAKER DATA	
REF NO	CB701,702
TYPE	Molded Case Switch
RATING	400AF
WITHSTAND	25kA @ 480VAC (per UL ratings)
MOUNTING	Plug-in, (1) 250-500 MCM line lugs
SHUNT TRIPS	No
AUX CONTACTS	Yes - monitored internally
MANUFACTURER	ABB
BREAKER SERIES	Tmax T5

**ADDITIONAL INFORMATION:**

- Neutral Monitoring
- Branch CT Ratings: 60A only
- Display Type: Advanced: 800x600 pixels, 16-bit color

**LEGEND**

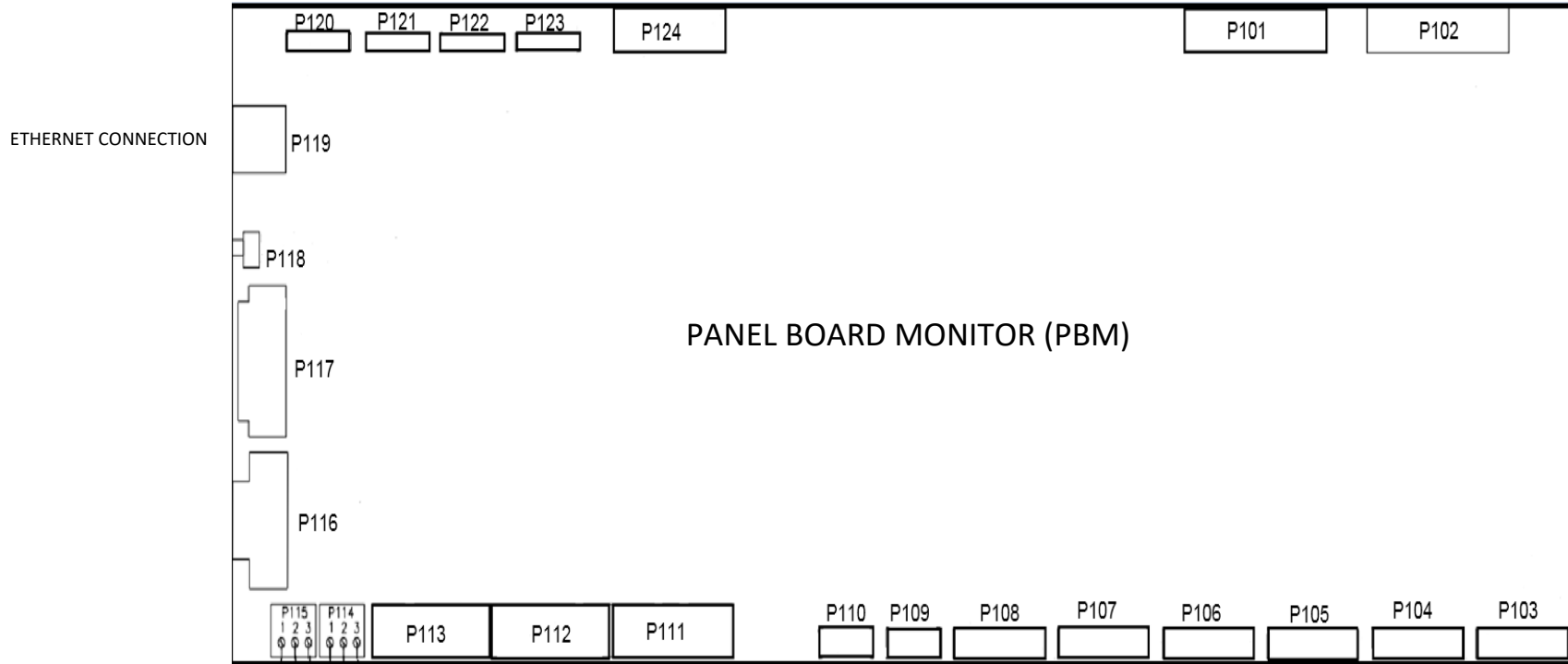
(A)	CURRENT METERING POINT
(V)	VOLTAGE METERING POINT
PBM	PANEL BOARD MONITOR WITH ETHERNET PROVISION
—▷	PANEL BOARD MONITOR SENSING SIGNAL

		PAGE DESCRIPTION		
		ONE LINE DIAGRAM, ePanel-HD2		
JOB	DRAWN	DATE 6/20/2023	DWG NO	REV A
	CHK	DATE	ePanelHD2000043	
	APPR	DATE		
SHEET 1 OF 2				

# PANEL BOARD MONITOR (PBM)



SYMBOL FOR CLOSED CONTACTS



PANEL BOARD MONITOR (PBM)

P115  
SUMMARY ALARM

SUMMARY ALARM



NO SUMMARY ALARM



NOTES:

1. TERMINAL NUMBERS REFER TO TERMINALS ON PANEL BOARD MONITOR (PBM). THE PBM IS LOCATED IN THE CONTROLS/MONITORING SECTION. REFER TO THE MECHANICAL OUTLINE DRAWING FOR EXACT LOCATION.
2. TERMINALS SUITABLE FOR AWG 20-16 STRANDED COPPER WIRE. MAXIMUM ONE WAY LENGTH FOR #16: 500 ft (152 m).
3. ALL WIRING TO BE IN ACCORDANCE WITH THE NATIONAL ELECTRIC CODE AND ALL LOCAL CODES. CONTROL AND STATUS WIRING MUST BE RUN AND IN SEPARATE CONDUIT FROM POWER WIRING.
4. SUMMARY ALARM CONTACTS ARE DRY, POTENTIAL-FREE CONTACTS.  
CUSTOMER REQUIREMENTS ARE AS FOLLOWS:
  - a. Open circuit voltage  $\leq$  120 V RMS AC.
  - b. Closed circuit current  $\leq$  1 A RMS.

		PAGE DESCRIPTION		
		ONE LINE DIAGRAM, ePanel-HD2		
JOB	DRAWN	DATE	DWG NO	REV A
	CHK	DATE		
	APPR	DATE	SHEET 2 OF 2	