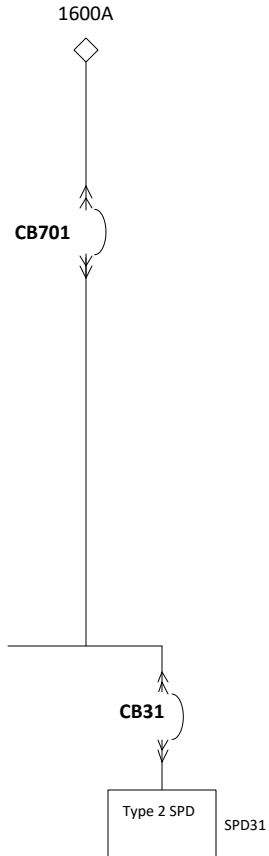


Series 70 eRDP

CIRCUIT BREAKER DATA

REF NO	RATING	FAULT RATING	TYPE	MOUNTING	AUXILIARY CONTACTS	SHUNT TRIPS	MFG	BREAKER SERIES
CB701	1600AF / 1600AT, 100%	65kAIC @ 480VAC (per UL ratings)	Electronic Trip (LSIG) w/ Arc Red Mode	Fixed	No	No	ABB	Emax 2

480V, 3-Phase, 3-Wire + Ground, 60Hz



ADDITIONAL INFORMATION:

1. Input Terminals: Two-hole Compression Lug Terminals

SAFEPANEL NOTES

1. SAFEPANEL IS CENTER-TAPPED.
2. MAXIMUM TOTAL CURRENT: 1200A
3. MAXIMUM CURRENT ON EITHER SIDE OF TAP: 800A
4. FOR 400AF SUBFEED CIRCUIT BREAKERS:
 - a. MAXIMUM RATING OF ADJACENT CIRCUIT BREAKERS: 80%
 - b. FOR 100% RATING, ONE EMPTY SPACE IS REQUIRED ABOVE CIRCUIT BREAKER.

			PAGE DESCRIPTION	
			ONE LINE DIAGRAM, RDP	
JOB	DRAWN	DATE 9/3/2024	DWG NO	REV
	CHK	DATE		
	APPR	DATE	SHEET 1 OF 2	

THIS PAGE INTENTIONALLY LEFT BLANK